

A large, solid orange circle is positioned on the left side of the page, partially overlapping the word 'native.'

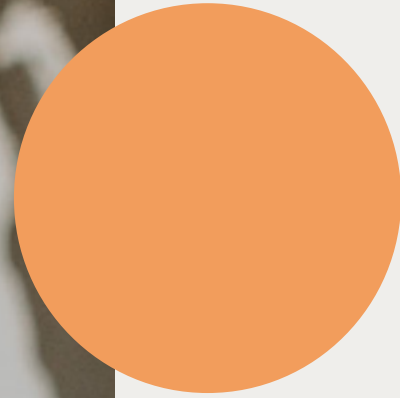
native.

URBAN — NATURAL LIVING

by Kronos Homes

A photograph of a family of three in a field at sunset. A man with a beard, wearing a black sweater, carries a young girl with long blonde hair on his shoulders. The girl is wearing a tan coat and has a joyful expression. A woman with long brown hair, wearing a light-colored sweater, stands to the right, looking at the man and girl with a smile. The background features a wooden fence, evergreen trees, and a warm, golden sky. The text "A PLACE TRULY BELONGS TO THOSE WHO MAKE IT THEIR HOME." is overlaid on the left side of the image in a white, serif font.

A PLACE TRULY
BELONGS TO THOSE
WHO MAKE IT
THEIR HOME.



A PLACE TRULY BELONGS TO THOSE WHO MAKE IT THEIR HOME.

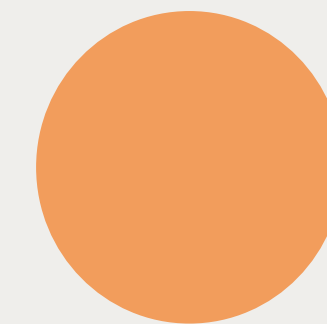


BEING BORN AGAIN WITH THE COURAGE TO MOVE AND MAKE THEIR LIVES TRULY THEIR OWN.



TOWARDS A SPACE WHERE DESIGN IS PART OF THE NATURE THAT MERGES WITH THE ENERGY OF THE CITY, THE COMFORT OF A HOME AND THE LIFE OF EACH AND EVERY ONE, IN EVERY MOMENT.

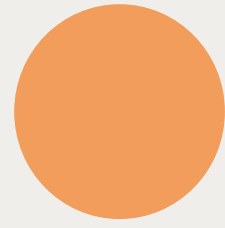




NATIVE IS THE NATURAL CHOICE FOR THOSE WHO SEEK MORE SPACE WHILE ACHIEVING THE PERFECT BALANCE BETWEEN NATURE AND MODERNITY.

DISCOVER A HOME TAILORED TO YOUR NEEDS IN BELAS CLUBE DE CAMPO, THE LARGEST DEVELOPMENT IN LISBON'S METROPOLITAN AREA.





RIGHT ON YOUR DOORSTEP, YOU'LL FIND A FOREST, A SCHOOL PREPARED FOR THE FUTURE, A GOLF COURSE AND PADEL COURTS, A SWIMMING POOL, A HEALTH CLUB, A COWORKING SPACE, THE BEST FLAVORS AND ALL THE SERVICES YOU NEED.



BECAUSE YOUR FAMILY'S EDUCATION, HEALTH, INSPIRATION AND ENTERTAINMENT FLOURISH IN THE COUNTRYSIDE, JUST OUTSIDE THE CITY.

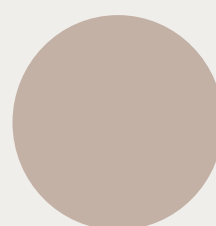


JARDIM-ESCOLA JOÃO DE DEUS DE BELAS



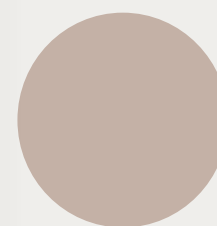
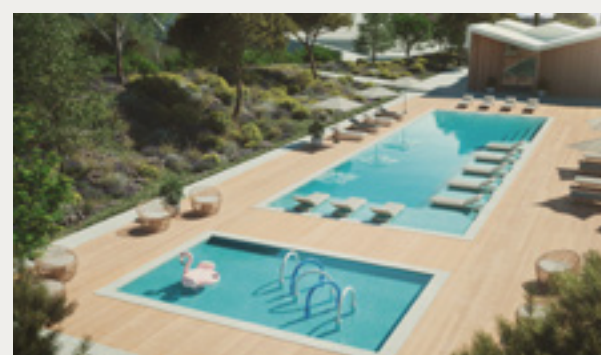
A multilingual and multicultural school open to the world. From nursery to 6th grade, inside the Belas Clube de Campo. So that your children can walk to school in complete safety.

TRAILS, GOLF AND PADEL



In the middle of nature, you'll find everything you need to stay active. From forest walks to the golf course and padel tennis courts, living here is a breath of fresh air.

POOL



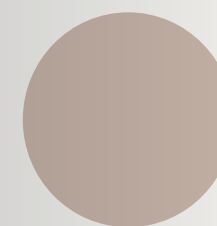
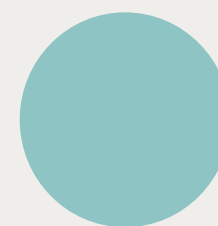
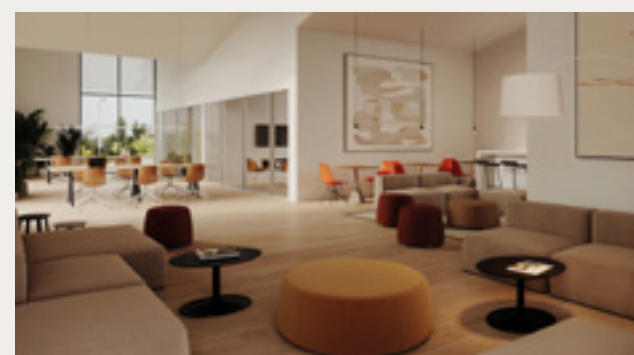
Diving, swimming, teaching your children to take their first strokes or relaxing on a sun lounger. Enjoy all of this without leaving your comfort zone.

RESTAURANT AND CAFÉ



In the Clubhouse restaurant, you'll find Portuguese flavors revisited for a family lunch or a dinner with friends. Café no Campo is perfect for breakfast and unplanned snacks.

HUB



A sharing space for everyone

- Coworking among nature and technology;
- Pick & collect point for online orders;
- Kids' Club for endless entertainment;
- Co-kitchen for sharing flavors;
- Gym;
- Multi-purpose room.

There are usage and maintenance costs associated with the use of this space.

24/7 SURVEILLANCE — MINIMARKET — DRUGSTORE — POST OFFICE — LAUNDROMAT — HAIRDRESSER — DECORATION STORE — PLAYGROUND

n. ACTIVE



n. SERVICES



n. FLAVOURS





IN THIS HUB, CITY LIFE GROWS IN THE COUNTRYSIDE WITH ALL ITS ENERGY. SO THAT EVERYONE CAN HAVE A SPACE BUILT FOR COMMUNITY LIVING AND SHARED CREATIVITY.



YOUR FAMILY DESERVES
TO LIVE IN A SPACE
WHERE QUALITY
AND DESIGN ARE
DEEPLY ROOTED
IN EVERY DETAIL.



AUTHORIAL ARCHITECTURE IS PART OF THE COUNTRYSIDE.



CAPINHA LOPES

“Our architecture at Belas Clube de Campo is motivated by a synthesis of ambitions and emotions. The ambition to contribute to a balance with nature, which supports and frames the projects without compromising the economic rationales that allow them to be developed. The emotions that the experience of these projects provides and contributes to the growth and well-being of a unique community.”



MIGUEL SARAIVA

“When architecture has the opportunity to create comfort in the middle of nature, an ideal project is born for families looking for more living space. Whether it's an apartment overlooking the forest or a townhouse with all the privacy and comfort one needs. Always with the sophistication and quality that we usually find only in the premium areas of major cities.”



THE NATURE OF YOUR FAMILY INSPIRES THE ENERGY OF YOUR HOME.

An apartment with large balconies facing the forest,
a townhouse with space for living, sharing and growing
or a plot of land to design a home tailored for your family.
The choice is yours and the best quality of life
is guaranteed by Native.

APARTMENTS

TOWNHOUSES

PLOTS







APARTMENTS

1 TO 4 BEDROOMS

STEP INTO YOUR NEW APARTMENT, BETWEEN THE FOREST AND ALL THE SERVICES YOU NEED. WITH SPACE FOR YOUR HOME OFFICE AND WIDE WINDOWS THAT INVITE THE LIGHT IN, YOU CAN LIVE LIFE TO THE FULLEST.

The building is light and delicate, with clear lines and tones that harmonize with the surroundings, taking on the character of a pavilion in the park, blending into the landscape.

Space is optimized to the fullest in the apartments: reducing circulation areas but maintaining the differentiation between day and night zones and creating plenty of storage.



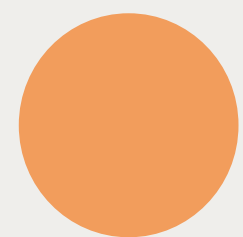


TOWNHOUSES

T4

CONTEMPORARY DESIGN, A SWIMMING POOL AND PLENTY OF NATURAL LIGHT DEFINE THE NEW SPACE FOR YOUR FAMILY TO LIVE IN AND GROW ALONGSIDE NATURE, WITH THE CITY AT YOUR DOOR.

With a delicate, contemporary and timeless language of clear lines and tones that harmonize with the landscape, each townhouse invites you to stay and take refuge.

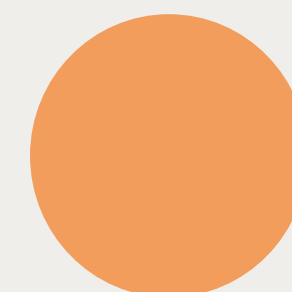






PLOTS

A UNIQUE FAMILY
DESERVES A UNIQUE
HOME. CHOOSE YOUR
PLOT OF LAND AND
TURN YOUR DREAMS
INTO REALITY WITH
A HOUSE IMAGINED
AND DEVELOPED
TO SUIT YOU.







NATIVE IS LOCATED IN BELAS CLUBE DE CAMPO, CLOSE TO LISBON, OEIRAS AND CASCAIS SO THAT YOUR FAMILY CAN LIVE IN THE MIDST OF NATURE YET CLOSE TO EVERYTHING.



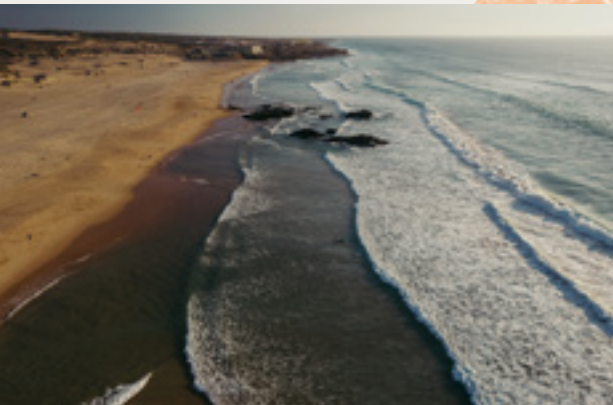
**NATIVE IS
CLOSE TO
EVERYTHING.**



**32 MINUTES
FROM BAIRRO
ALTO'S
NIGHTLIFE**



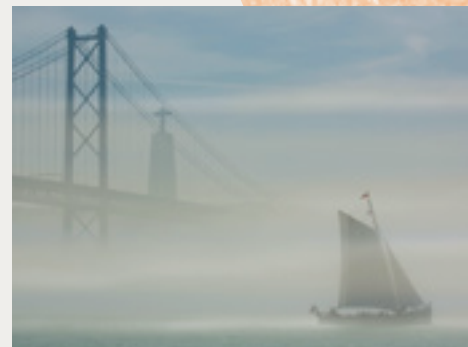
**14 MINUTES FROM
THE COLOMBO
SHOPPING CENTER**



**26 MINUTES FROM
THE WAVES
OF GUINCHO**



**22 MINUTES FROM
THE WORLD VIA
LISBON'S AIRPORT**



**24 MINUTES
FROM THE
PEACE OF THE
TAGUS RIVER**



**32 MINUTES FROM
THE HUSTLE AND
BUSTLE OF THE
LIVELY CHIADO**



**32 MINUTES
FROM PARQUE
DAS NAÇÕES**

**AND OFFERS
THE BEST OF
THE CITY AND
COUNTRYSIDE.**



**4 MINUTES
FROM THE
MATCHPOINT
IN THE PADEL
COURT**



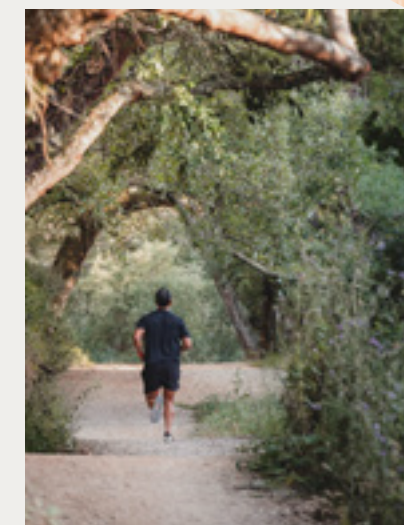
**2 MINUTES FROM THE INFINITE
GREEN OF THE GOLF COURSE**



**1 MINUTE FROM THE
FUTURE AT THE JARDIM-
ESCOLA JOÃO DE DEUS**



**1 MINUTE FROM
CREATIVITY AT THE
COWORKING SPACE**



**30 SECONDS
FROM VERDANT
TRAILS IN
THE FOREST
PARK OF THE
SERRA DA
CARREGUEIRA**



**4 MINUTES FROM A
TOAST WITH FRIENDS
AT THE CLUBHOUSE**

MASTERPLAN



- 1 SALES HOUSE
- 2 APARTMENTS
- 3 TOWNHOUSES
- 4 PLOTS
- 5 MULTIPURPOSE BUILDINGS
- 6 COMMERCE AND SERVICES
- 7 JARDIM-ESCOLA JOÃO DE DEUS DE BELAS
- 8 NATURE RESERVE
- 9 PLAYGROUND

- 10 CLUBHOUSE, DRIVING RANGE, GOLF COURSE
- 11 HEALTH CLUB, SWIMMING POOL, DRUGSTORE, MINIMARKET
- 12 TENNIS, PADDLE TENNIS, FOOTBALL, SKATEPARK
- 13 ELECTRIC CAR CHARGING STATION
- 14 POST OFFICE, DECORATION STORE, LAUNDRY, HAIRDRESSER
- 15 BELAS CLUBE DE CAMPO OFFICES

TECHNICAL SHEET:

APARTMENTS

TYOLOGIES 1 TO 4 BEDROOMS

- GARDEN
- COMMERCE AND SERVICES
- GARAGE AND STORAGE ROOM
- ELEVATOR
- SOLAR PANELS

TOWNHOUSES

TYOLOGIES 4 BEDROOMS

- LARGE INDOOR AND OUTDOOR AREAS
- GARDEN AND PRIVATE POOL (OPTIONAL)
- ALL BEDROOMS ARE EN SUITE
- SOLAR PANELS
- ELECTRIC SHUTTERS

PLOTS

AREAS FROM 600 M² TO 1600 M²

- BREATHTAKING VIEWS FROM ALL PLOTS
- PLOTS FOR BUILDING HOUSES TO SUIT EACH FAMILY
- CHOICE OF ARCHITECTS
- PRELIMINARY ARCHITECTURAL DESIGNS AVAILABLE

native.

URBAN — NATURAL LIVING